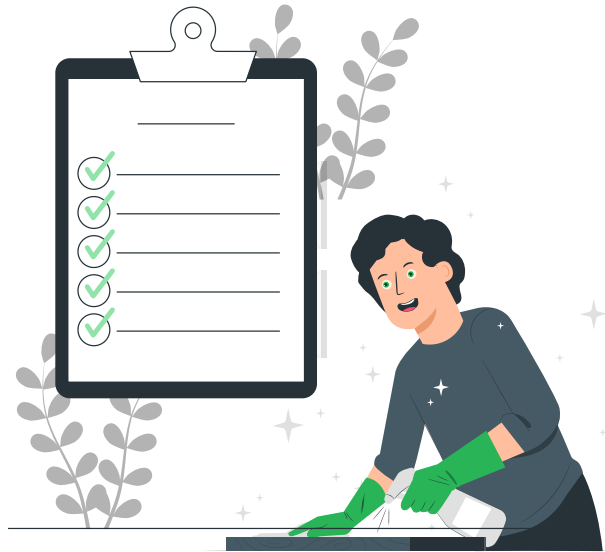


4 Ways to Improve Your Cleaning Quality With APPA

Daily Cleaning Task Validation:

There are four practical ways you can boost your cleaning quality with the help of APPA scores.

By focusing on these key areas, you can create an inviting space that everyone will appreciate.



1 Develop Agile Cleaning Evaluation Processes



- Compare practices against APPA standards
- Identify process gaps and use data to guide decisions
- Ensure products enhance cleaning efficiency

2 Strategically Provide Ongoing Training



- Conduct regular training on APPA practices
- Foster a culture of open feedback
- Use real-time data to recognize efforts and improve retention

3 Balance Workloads and Hire More Staff



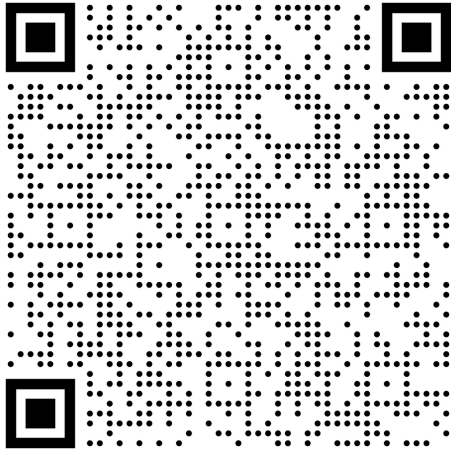
- Evaluate task distribution to avoid overworking custodians
- Use APPA performance data to justify additional staff if needed
- Set clear goals to support team performance and job satisfaction.

4 Share Progress With Stakeholders



- Use Data To Support Leadership Decisions
- Guide budgets with performance data
- Foster cleanliness responsibility amongst all

Self-Evaluation: How Data Driven Is Your Organization



[Download Worksheets](#)

Evaluating Maturity of Current Processes			
CATEGORY	ITEM	QUESTION	YOUR ANSWER
	Scope of work and	How much square footage do you clean daily and how	

Evaluating Maturity of Data-Driven Cleaning Operations					
CATEGORY	MATURE - 8 PTS	PROGRESSIVE - 4PTS	UNDEFINED - 2 PTS	SCORE	
Current Cust Oper	Workloading	The organization uses cleaning standards and quality expectations to justify staffing budgets based on benchmarking.	Organization uses current staffing levels and general performance data to justify staffing decisions.	Organization relies on past custodial budgets to determine headcount.	
	Workloading	The organization uses digital tools to measure tasks and square footage, adjusting staffing and resources consistently across their facilities.	Organization evaluates routes and custodian workload on an annual basis to ensure proper coverage. Use square footage but most likely not any performance data.	Organization uses same routes as always with little to no change in routes over time.	
Data Anal	Floor plans	Organization has up to date floor plans of all buildings (square footage & room types included) located centrally in a technology solution. File types for floor plans are the same. Updates annually or bi-annually.	Organization has relatively up to date floor plans that are centralized. Updates every few years and may be multiple file types.	Organization has limited updates on floor plans. May have multiple file types and no centralized way to access. Limited data available on the floor plans.	
	Every day Cleaning	Organization has custodians use digital solutions to validate cleaning by location. They also use these to record "extra work" and other task types. Work is captured in a centralized dashboard with real-time data.	Organization has custodians validate work through analog methods (i.e. clipboard on back of door, sign out sheets, etc.) This work is centrally collected for deeper review a few times a year.	Organization relies on custodians to do work assigned with limited confirmation of work completed throughout the day. This work is not centrally captured or reviewed.	
	Cleaning Quality	Organization has own cleaning standards or uses an industry standard (such as APPA) to benchmark. Training occurs bi-annually or quarterly. Org is aligned from a staffing strategy perspective to achieve standard.	Organization has own cleaning standards or uses industry standard. Training occurs for new employees with annual staff refresh. Org does not fully align their operations to meet standards or use data to do so.	Organization does not update cleaning standards or track performance against cleaning standard expectations. Training occurs for new employees but often is not scheduled consistently for existing staff.	

As your organization begins to become more data-driven, it's good start with evaluating your current processes, procedures, & work culture.

We have developed two different worksheets to help you get started on that journey. The first worksheet, **Evaluating Maturity Of Current Processes**, is meant to kick off deep thinking regarding every area of your operation and key data points to have on your process and strategy. The second worksheet, is an actual rubric you can use to **Evaluate the Maturity of Data-Driven Cleaning Operations**.

You can access them by scanning the QR code (above) or clicking the link below.

<https://rb.gy/npyfr8>